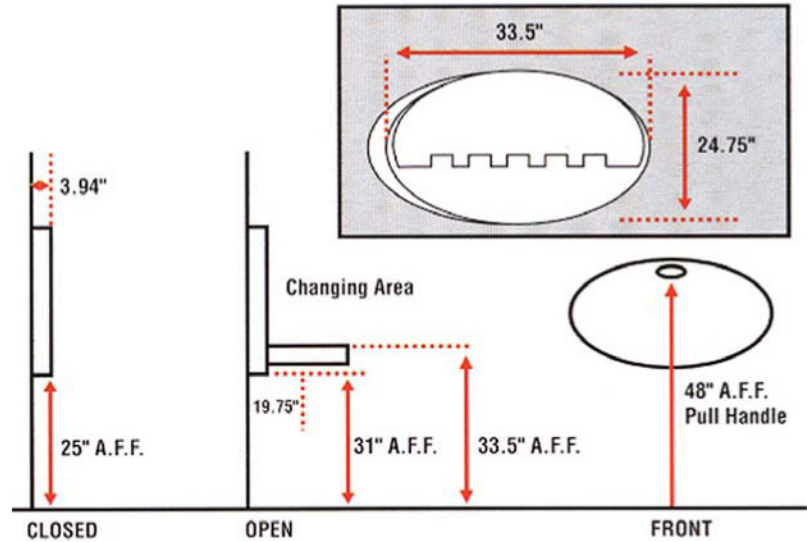


Diaper-Depot® Oval Baby Changing Station



Specification:

Unit should be constructed from high density polyethylene which prohibits the retention of moisture and odors, reinforced steel rods to increase unit stability and completely hidden gas shocks. Unit should be provided with the necessary hardware to install on most wall types and a self adhesive sign for installation on restroom door. Unit should be proven to withstand at least 300lbs. of static weight. Unit shall be equipped with a genuine Safe-Strap® safety strap. Unit should be horizontal in design to prevent child from rolling of bed. Unit should contain a concave changing surface to ensure child's comfort and protection. Unit should contain dual dispensers for bed liners and or wet wipes. Unit should have full color instructions written in English, Spanish, French and German with universal characters to facilitate multilingual understanding and be molded into unit to prevent peeling, fading or vandalism. Unit should protrude no more than 4" from the wall in it's closed position and less than 20" when fully open. Unit should be adaptable to 16" or 24" stud wall construction with punch-out pre-drilled holes. Unit should be equipped with a molded-in diaper bag hook and utility shelf for customer convenience. All hardware for installation in most wall types should be provided. Design should allow for easy passage around unit and contain no corners to injure customers. Unit should comply with the following ADA Accessibility Guidelines when applicable and installed to the manufacturer's specifications: 4.4.1 Protruding Objects, 4.2.5 Forward Reach, 4.2.6 Side Reach, 4.23.3 and 4.23.7 Fixtures, 4.32.3 Knee Clearances at Counter and 4.32.4 Height of Counters. Unit should comply with ASTM PS 125 Consumer Safety Performance Standard for Commercial Diaper Changing Stations.

The illustrations and descriptions herein are applicable to production as of the date of this Cut Sheet.
 The manufacturer reserves the right to, and does from time to time, make changes and improvements in designs and dimensions.